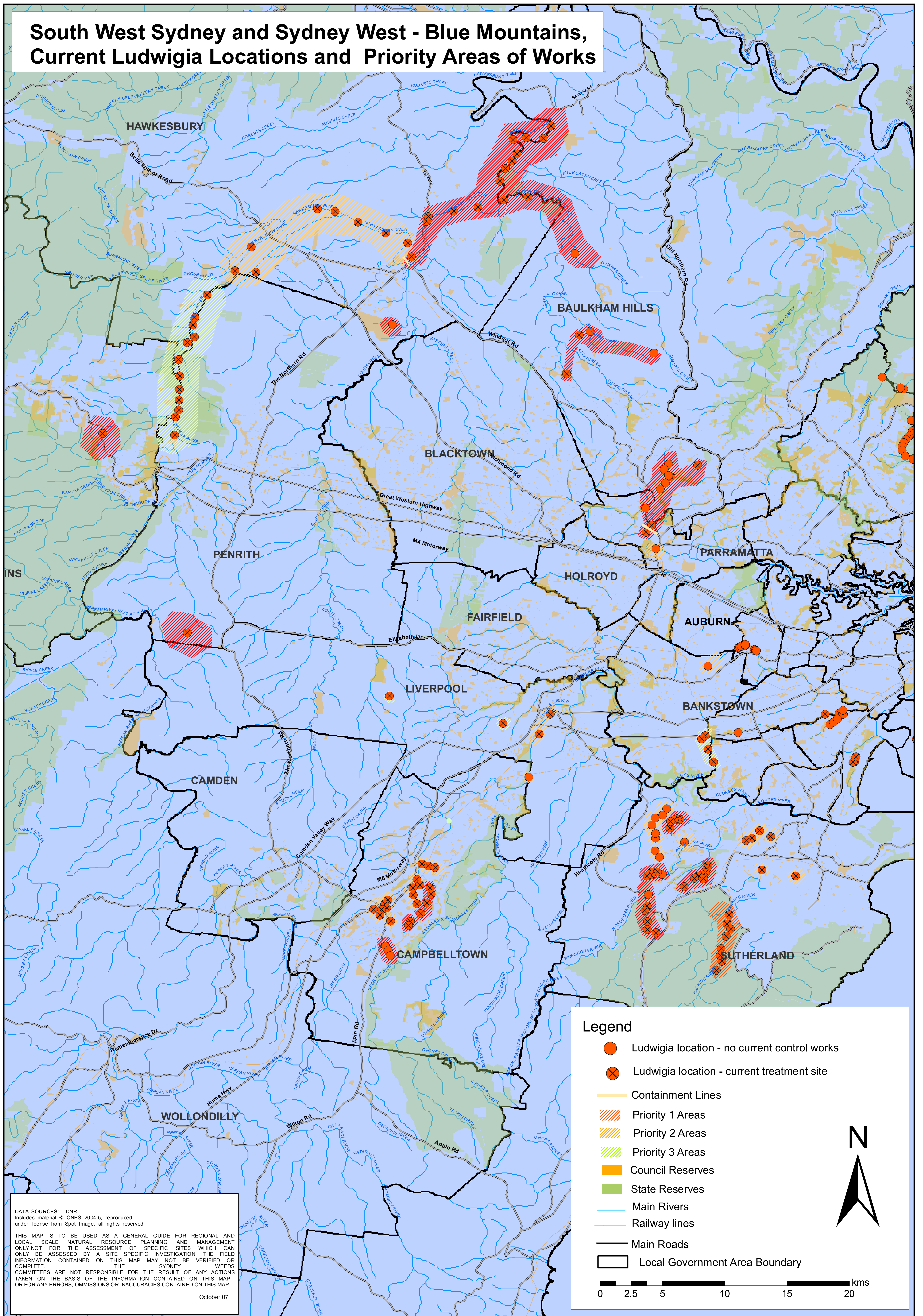


South West Sydney and Sydney West - Blue Mountains, Current Ludwigia Locations and Priority Areas of Works



DATA SOURCES: - DNR
Includes material © CNES 2004-5, reproduced under license from Spot Image, all rights reserved

THIS MAP IS TO BE USED AS A GENERAL GUIDE FOR REGIONAL AND LOCAL SCALE NATURAL RESOURCE PLANNING AND MANAGEMENT ONLY. NOT FOR THE ASSESSMENT OF SPECIFIC SITES WHICH CAN ONLY BE ASSESSED BY A SITE SPECIFIC INVESTIGATION. THE FIELD INFORMATION CONTAINED ON THIS MAP MAY NOT BE VERIFIED OR COMPLETE. THE SYDNEY WEEDS COMMITTEES ARE NOT RESPONSIBLE FOR THE RESULT OF ANY ACTIONS TAKEN ON THE BASIS OF THE INFORMATION CONTAINED ON THIS MAP OR FOR ANY ERRORS, OMISSIONS OR INACCURACIES CONTAINED ON THIS MAP.

October 07

Legend

- Ludwigia location - no current control works
- ⊗ Ludwigia location - current treatment site
- Containment Lines
- ▨ Priority 1 Areas
- ▨ Priority 2 Areas
- ▨ Priority 3 Areas
- Council Reserves
- State Reserves
- Main Rivers
- Railway lines
- Main Roads
- Local Government Area Boundary

0 2.5 5 10 15 20 kms

N