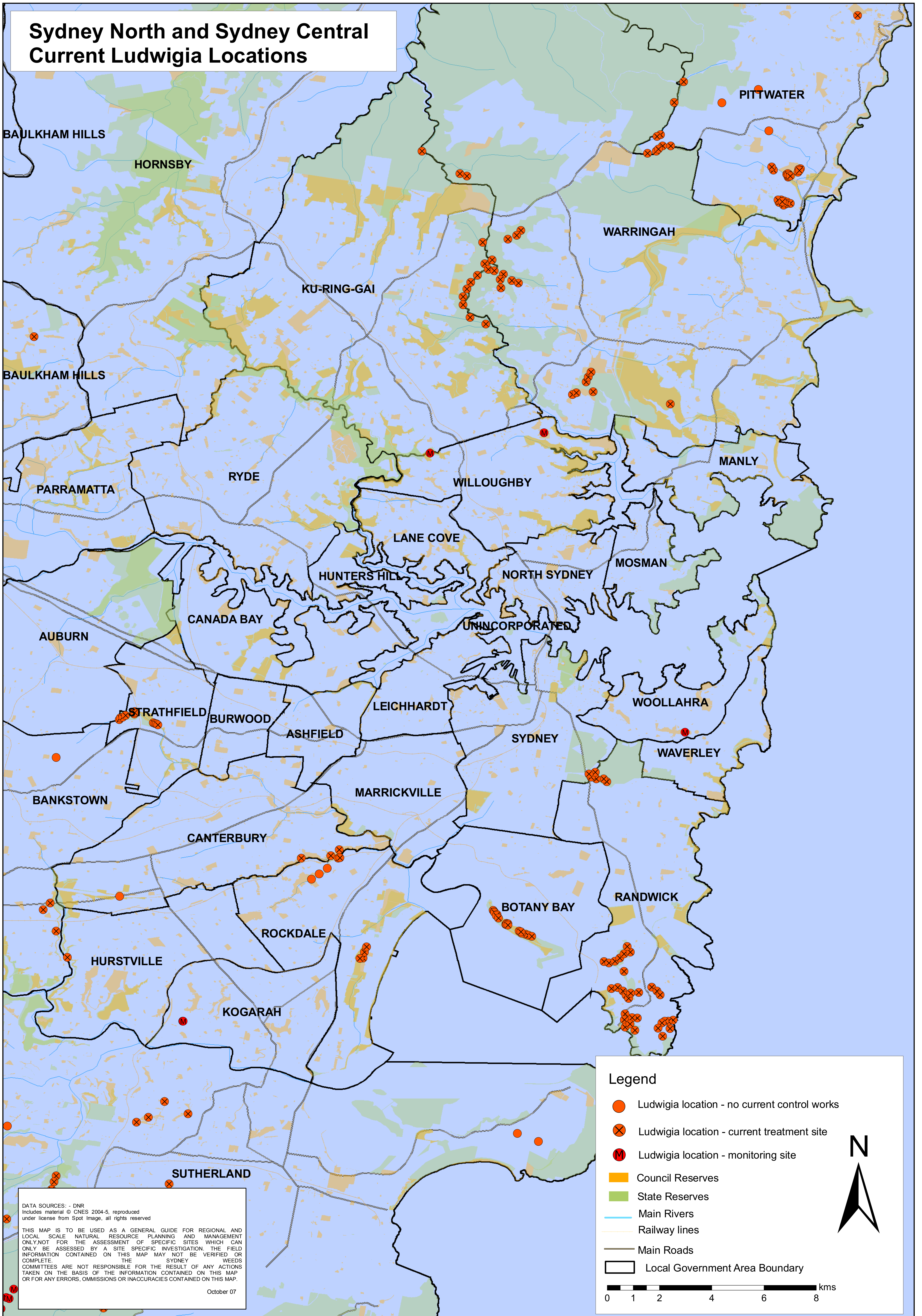


Sydney North and Sydney Central Current Ludwigia Locations



DATA SOURCES: - DNR
Includes material © CNES 2004-5, reproduced under license from Spot Image, all rights reserved

THIS MAP IS TO BE USED AS A GENERAL GUIDE FOR REGIONAL AND LOCAL SCALE NATURAL RESOURCE PLANNING AND MANAGEMENT ONLY. NOT FOR THE ASSESSMENT OF SPECIFIC SITES WHICH CAN ONLY BE ASSESSED BY A SITE SPECIFIC INVESTIGATION. THE FIELD INFORMATION CONTAINED ON THIS MAP MAY NOT BE VERIFIED OR COMPLETE. THE SYDNEY WEEDS COMMITTEES ARE NOT RESPONSIBLE FOR THE RESULT OF ANY ACTIONS TAKEN ON THE BASIS OF THE INFORMATION CONTAINED ON THIS MAP OR FOR ANY ERRORS, OMISSIONS OR INACCURACIES CONTAINED ON THIS MAP.

October 07