

Situation report – Christmas Candlesticks, Woy Woy (NSW Central Coast)

Sitrep No – 3

Date of issue – 5 Feb 2019

1. Situation to date

- In February 2018, the Central Coast Council Biosecurity Officer (Weeds), noticed the Christmas Candlesticks infestation growing next to the rail line in Woy Woy.
- The infestation was approximately 50m² in size with about 2m² growing on council land and the rest occurring on rail land managed by Sydney Trains.
- Equipment used for track maintenance is the suspected source of the infestation.
- Central Coast Council completed a Weed Risk Assessment, which produced an outcome of '**Destroy Infestations**'.
- Central Coast Council undertook primary control of the infestation on council land in March, following up with fortnightly maintenance in May and every two to three weeks since.
- The majority of inspections have detected seedlings which were immediately removed.
- Sydney Trains completed primary control in the rail corridor in March, with follow up maintenance occurring in August to September 2018.
- Central Coast Council observed seedlings in the rail corridor in January 2019.

2. Actions to date

- The herbarium confirmed that the species is *Leonotis nepetifolia*, noting that this is a significant record as it is the first official specimen of this species occurring as naturalised in NSW.
- DPI, GS LLS, the GS Regional Weed Committee, land managers and weed professionals across the region have been informed about the new incursion.
- Primary control has been completed on council and Sydney Trains land, with regular monitoring and maintenance on council land only.
- Inspections and control on council land have been reported to the Biosecurity Information System via Sydney WeedAPP.

3. Actions to be completed

- Continued site inspections and follow up weed control.
- Updates to be provided to the Regional Weed Coordinator.
- Sydney Trains to engage vegetation management contractors

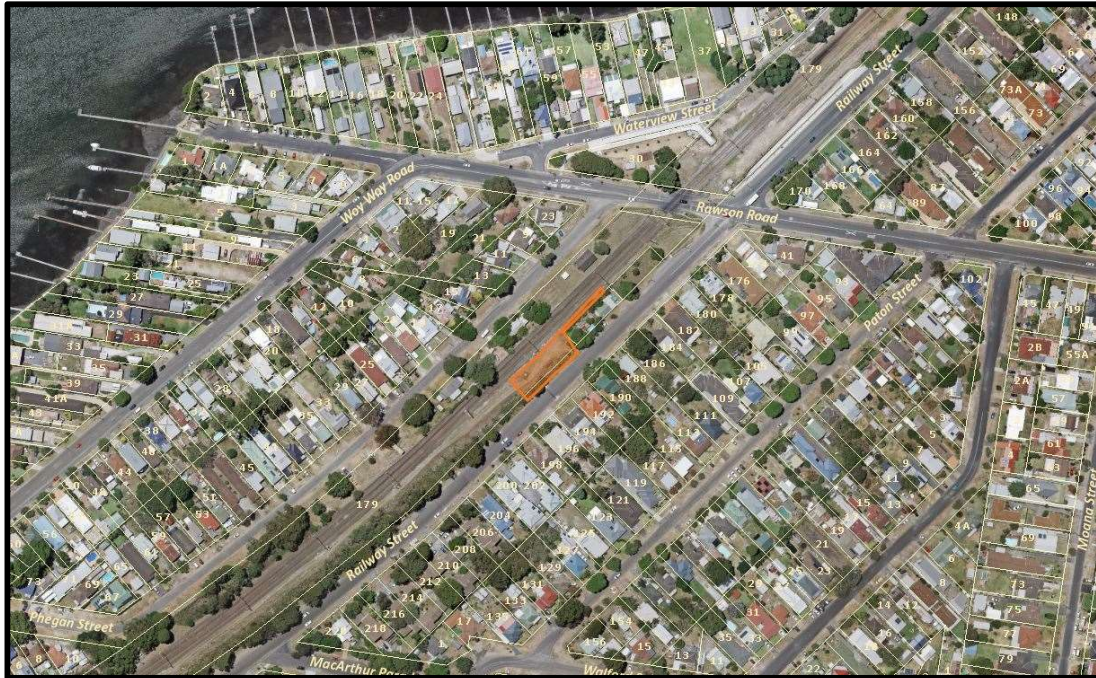
4. Issues

- This species grows rapidly at this site e.g. the infestation on council land was inspected on 18 June 2018 with all seedlings removed. When the site was reinspected on 28 June, a plant was found to have germinated, grown to approx. 400mm and to have commenced flowering.
- Lack of maintenance in rail corridor over October-January, with an ongoing maintenance budget by Sydney Trains only approved in January.

Completed by: Nicola Dixon, Regional Weed Coordinator – Greater Sydney.

Approved by: Graham Wilson, Chair of the Greater Sydney Regional Weed Committee.

Date: 6 February, 2019



Map 1: Location of infestation highlighted in orange.



**Figure 1: Initial sighting
26 February**



**Figure 2: Follow up inspection
28 May. 25 days of growth.**