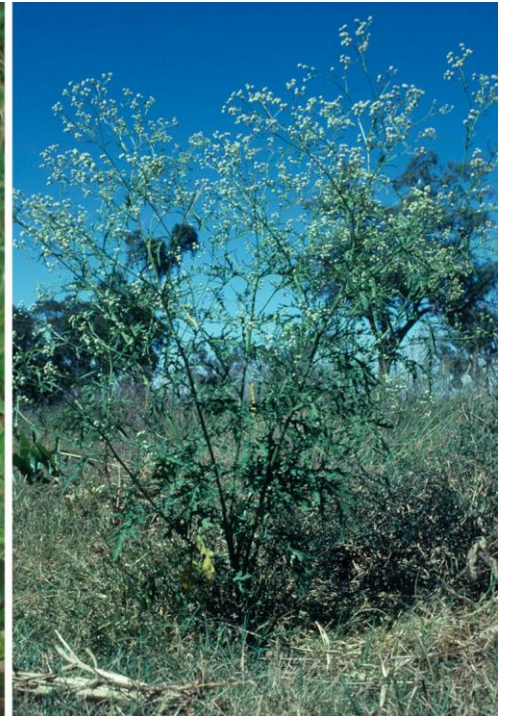


Seen this plant? Parthenium weed

Parthenium hysterophorus



How does this weed affect us?

Parthenium weed can cause severe dermatitis and respiratory problems in humans.

It invades pastures and crops and can also cause health problems in horses and cattle and to a lesser extent sheep, goats and dogs.

Parthenium weed:

- is toxic to livestock
- outcompetes pastures
- can taint the flavour of meat or milk
- reduces crop yields
- contaminates grain
- is a host plant for crop viruses.

Seen it? Call us:

NSW DPI Biosecurity Helpline

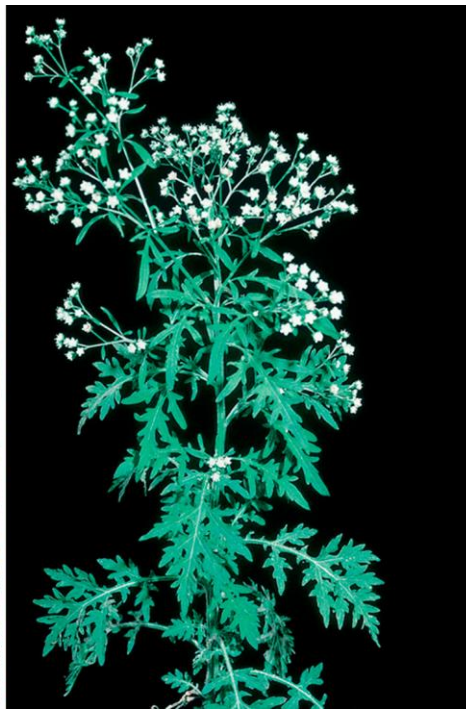
1800 680 244

Help protect our farms and grazing lands.

For control and biosecurity information visit NSW WeedWise:

weeds.dpi.nsw.gov.au/weeds/partheniumweed





Where are you likely to find it?

Parthenium weed has recently been found in an urban compost heap in Engadine. It may have spread to other locations in Greater Sydney.

Look for it where:

- there is lots of bare soil (roadsides, poor pastures)
- new soil or compost has been delivered
- earthworks have taken place
- hay, grain or seed has been fed to livestock or chickens.

Check regularly and especially after rain.

What does it look like?

It is fast-growing and usually grows up to 1.5 m tall but can be up to 2 m tall.

Leaves are pale green and covered in soft fine hairs. Lower leaves are 5–20 cm long and deeply divided. Upper leaves are smaller and less divided.

Flowers are creamy white, 4–6 mm across and star-like with 5 distinct points. Flower clusters are delicate and look a bit like "baby's breath".

Stems are grooved, woody when older, and have many branches when flowering.

Seen it? Call us:

NSW DPI Biosecurity Helpline

1800 680 244

Help protect our tracks and trails.

For control and biosecurity information visit NSW WeedWise:

weeds.dpi.nsw.gov.au/weeds/partheniumweed

